

B.R.S. BACTERIAL REDUCTION SYSTEMS

Sensing Industry Needs With Intelligent Solutions

Technologically Advanced Water/Fluid Treatment Method's & Systems For The Irrigation & Agricultural

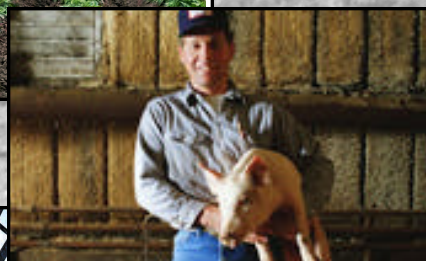
Cows are "Fussy" The More Water They Drink, The More Milk They Produce.
(Healthier Cows)



Crops Absorb Water & Nutrients Faster
(increase crop yield)



Enhance Watering & Cooling System
(improve hog raising operations)



Prevents Clogging of Drip & Irrigation Emitters
(improves wetting efficiency)



Improves Operating Efficiency of Medicators, Bell Nipple Waterers & Feed Lines
(safeguard your poultry and yield)



Water The Way Nature Intended It!



TWT Modular Water Treatment Systems For The Control of Scale Deposits • Bio-film • Algae • Colloids In All Water Feed Lines & Irrigation Equipment

The bacterial reduction systems are designed, engineered to integrate with existing treatment processes and equipment configurations.



Farming communities faces many operating challenges on a day to day basis, among them variable costs and revenues for a broad range of supplies, equipment, and processes, including fertilizers, water, energy, farm machinery, storage, labor for cultivation and harvesting, and market selling prices. Farming expertise keeps the farm on an even keel, but intelligent and responsible use of new and available technology often gives an owner an edge that would otherwise be unreachable. Sometimes it can even mean the difference between staying in or going out of business.

An area of challenge that frequently remains unaddressed is that of water quality and its impact on farming operations, both crop and livestock. ***According to the U.S. Geological Survey, 85% of the U.S. suffers from hard water and its effects. Chances are, your farm is part of the 85%...*** Triangularwave Technologies, Inc. manufactures fluid management products

and solutions designed to enhance your operating conditions, taking the negatives of poor water quality and turning them into an improved bottom line and profit margin for your farm.

TWT has pioneered the advanced design of fluid management products to meet the needs of residential, commercial, and industrial applications. TWT manufacturing expertise is reflected in our efficient engineering design team. Our technical test department constantly strives to meet the ever changing requirements of the fluid management environment. Our unique capabilities and design expertise have successfully solved a wide variety of problems for a wide variety of customers. Under the direction of a manufacturing supervisor and group leaders, our state-of-the-art products are designed and assembled to meet our precise quality control standards, and to support the needs of the agricultural sector to the highest levels.

Dairy Farms/Water Quality Problems:

Stock water

Deposit control and better taste for hard water used for cow watering. Dairy cows need between 15 and 35 gallons per head per day for drinking and barn needs; many cows are "fussy" about the water they drink. The more water they drink the more milk they produce. Deposit control means that waterers do not scale up and leak, and that the lines are clean.



Cleaner Water (produces healthier cows)

Treated water usually requires less chemical additives. Iron in the water is bound up with the scale minerals and taken out of the "chemistry"; the result is easier clean-up using fewer chemicals to remediate the iron effects. Field experience has shown that water supplies with E. coli contamination showed a zero count after treatment by the Triangularwave System.

TWT Deposit Control Systems work continuously to keep your water feed lines clear, clean, and well maintained, significantly reducing biofilm and resulting bacteria, and providing easy flow access to the water supply for your livestock.

Aquaculture

To survive, grow, and reproduce, fish require quality water. Water quality variables that are of extreme importance to a successful aquaculture operation include temperature, pH, dissolved oxygen, carbon dioxide, alkalinity, and ammonia. To the extent that these variables either maintain or diverge from their optimum levels is a large measure of the success or failure in harvesting quality fish, and so a careful balance must be maintained at all times.

Carbon Dioxide, pH, and Alkalinity: according to the Department of Animal Ecology at Iowa State University, at night, respiration by bacteria, plants, and animals results in oxygen consumption and carbon dioxide production; during sunlight, respiration continues, but algae uses CO₂ for photosynthesis. In productive ponds, especially those with low alkalinity, the daytime pH may reach 10, which can be lethal to young fish.

Calcium Carbonate is used to help control nitrates, and pH in the water. Useful for those purposes, it does, however, greatly increase the probability of scale and biofilm conditions, which affect heat exchange (temperature control) and bacteria levels. Ammonia results from the breakdown of fish feed and wastes; chronic exposure to certain forms can be toxic to warm water species. Dissolved oxygen is a most critical factor. More fish die from low dissolved oxygen levels than from any other factor, according to the Aquaculture Network Information Center.

Aquaculture continued

Temperature, another broadly critical factor, controls the solubility of gases in water, the reaction rate of chemicals, the toxicity of ammonia, and of chemotherapeutic to fish. TWT Deposit Control Systems tackle these problems efficiently and without chemicals. Our Triangularwave System reduces or prevents the occurrence of scale and biofilm formation from calcium carbonate, reduces or prevents the occurrence of scale and biofilm formation from fish and food wastes, in turn reducing the occurrence of ammonia, as well as bacteria conditions. Allows hard water to be "wetter", i.e., allows for greater hydration of the water - less hydrogen bonding to oxygen molecules allows optimum and consistent heat exchange and operating efficiency by keeping piping, pumps, heaters, boilers, and tanks free of scale build-up and the resulting reduced heat exchange levels and increased energy consumption.

Visit the TWT website home page and click on Ultraviolet Disinfection Systems for additional information beneficial to the aquaculture industry.

Hog Raising Operations

Animal Waterers

Deposit reduction and/or control in the water nozzles and valves, which can stick opened or closed, either wasting water or preventing the hogs from obtaining the water they need.

Pen Cooling Mistlers

Deposit control in the water nozzles, allowing proper misting and dispersion.

Water Wall Curtain Cooling System

The temperature in hog facilities is very important. If the animals get too hot they suffocate. To help control cost of operation and lower air conditioning costs, a water wall curtain is used. This is a system that uses a heavy plastic panel (plastic curtain) like in cold storage warehouses. This water wall has a header applying streams of recycled water to the wall. The water collects in a trough at the bottom. As the water streams down the wall curtain, the water cools air that is coming through the slits in the curtain. This does two things: it cleans the air and drops the air temperature. Triangularwave system would prevent scale deposits on the header nozzles and on the wall curtain itself.

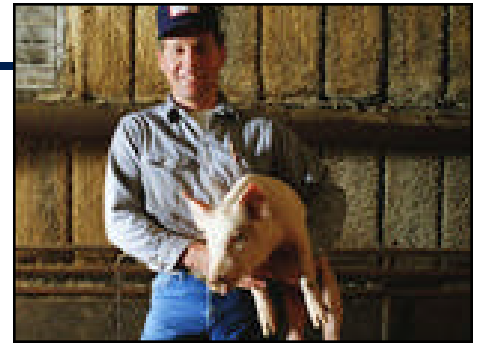
Waste Management

Waste management is a huge cost and a large, constant problem. Water is used to flush the floor and pen areas. The waste is directed to troughs and eventually to pits where it is lagooned for liquid application to fields. Triangularwave Systems can prevent clogging of pipe lines, pumps, sensors, etc.

Hog Watering System

Many of the health problems of the hogs stem from the water chemistry. Triangularwave Systems offer deposit control and better taste. Hogs will drink more, improving their health & viability, increasing the herd, and improving the end quality.

Visit the TWT website home page and click on Ultraviolet Disinfection Systems for additional information beneficial to the hog raising industry.



Crop Farms/Triangularwave Systems Benefits:

Irrigation System

Deposit control in spray nozzles, pipes, pumps, and valves.

Soil Moisture

Reduced surface tension allows greater moisture penetration into the soil. Salts in the water are flushed beyond the root zone.

Spray Equipment

Deposit control in spray applicators of fertilizer and pesticides.

Rolling Stock

Control scale deposits in the cooling systems and radiators of tractors, trucks, and generators.



Poultry Farms

Bird Waterers

Treatment and deposit control in water lines and on bell-nipple waterers. Reduced leakage at valve, leading to drier and more easily handled manure.

Medicators

Deposit control in medication ports in watering systems.

Purification System

Reduction and/or elimination of chlorine (makes the birds hyperactive and panicky) by using the Triangularwave Deposit Control System with the Triangularwave IonGuard Purification System; TWT provides a complete, non-chemical solution.



Turkey Farm Reduces Harmful Biological Build-ups with Triangularwave System

Farm(s) raise approximately 10,000 turkeys during each growing cycle. A growing cycle is 17 weeks from the time they receive the turkey chicks. Maintaining the turkey's optimum health and growth results in the farms maximizing their operation. Profits were being lost when a certain percentage of the birds would not survive until the end of the 17 week cycle, and others would not reach their full weight.

Hard water was one problem that the farmers knew was costing them turkeys and, ultimately, dollars. The deposits from their water source would quickly leave scale build up on the bell nipple waterers and coat them with a thick white crust; restricting drinking water for the turkeys. The deposits also clogged the medicators that are used for disease prevention. Even with regular cleaning, the restricted flow in the systems took its toll on the turkeys; as they received inadequate water and medication

The scale also was a breeding ground for bacterial growth, which increased the chances of infection and other unhealthy situations. A strong ammonia odor from the barns was evidence of waste and bacteria.

Farmers estimate that their annual loss was about 10 percent of their turkeys. Much of the loss can be attributed to the scale and bacteria problems caused by the hard water.

A Triangularwave System was installed on the main water supply line to the farm. The scale build-ups on the bell nipple watering system began to disappear, and cleaning became unnecessary. In addition, the strong ammonia odor on the farm was greatly reduced. As evidence of the positive effect of the Triangularwave System, the mortality rate of the turkeys dropped by half. Furthermore, the turkeys at maturity are heavier and healthier. ***The Triangularwave System eliminated the severe scale problem, and that means, the farms sells more turkeys, and heavier turkeys.***

TWT installations have eliminated the scale and biofilm, as well as the need for the sodium and chlorine treatment of the water.

The methods employed resulted in the following benefits:

- ***Saves salt and other chemical additive costs***
- ***Saves equipment maintenance costs***
- ***Saves chemical handling costs***
- ***Saves electricity costs***
- ***Produces healthier products***
- ***Reduces mortality rates***
- ***Produces higher profit margin***
- ***Improves food conversion rates***



The TWT® Modular All-In-One water filtration, disinfection and purification systems are unique, compact, self-contained units (easy installation & operation).

Cost Effective And Pays For Itself



**TWT-POEPOUV-604SC
(4 GPM)**

Specifications:

Applies all the needed elements for maximum fluid protection, management, and peace of mind in one simple packaged solution. Technologically advanced method for water management. Staged Filtration: Sediment, Carbon and GAC. Filters are interchangeable allowing you to meet your specific water treatment needs at all times). TWT® Microprocessor Deposit Controller, Reaction Chamber, and UV Disinfection /Purification units are combined to provide a start-to-finish answer to

simplified prevention, treatment and management of water contamination dangers. System components are integrated and shipped ready to put in place, plumbed into water line (source water), and operate.

Factory assembled and mounted, Pipe size: 3/4" In/Out Unit size: Approx 44"W X 31"H X 10"D • Approx weight 52 lbs. All TWT systems are shipped with 120 VAC/60Hz current source. Other current source available upon request. Must specify current source requirements when placing order



TWT-MD-1004SC (12 GPM)

Specifications: Applies all the needed elements for maximum fluid protection, management, and peace of mind in one simple packaged solution. Technologically advanced method for water management.

Staged Filtration: Sediment, Carbon and GAC. * Filters are interchangeable allowing you to meet your specific water treatment needs at all times). TWT® Microprocessor Deposit Controller, Reaction Chamber, and UV Disinfection /Purification units are combined to provide a start-to-finish answer to simplified prevention, treatment and management of water contamination dangers. System components are integrated and shipped ready to put in place, plumbed into water line (source water), and operate. Factory assembled and mounted on stainless steel frame with mounting brackets and/or holes provided. Size Approx. 40"W X 43"H X 8"D, Weight Approx 85 lbs. (may vary according to custom design). Pipe size 1" in/out All electrical, piping, fittings, pumps, and materials (equipment) used in the system can be engineered and system integrated to conform to requirement of the submitted RFQ.



**TWT-MD-1003SC
(8 GPM)**

Specifications: Applies all the needed elements for maximum fluid protection, management, and peace of mind in one simple packaged solution. Technologically advanced method for water management.

Staged Filtration: Sediment, carbon and GAC. Filters are interchangeable allowing you to meet your specific water treatment needs at all times). TWT® Microprocessor Deposit Controller, Reaction Chamber, and UV Disinfection /Purification units are combined to provide a start-to-finish answer to simplified prevention, treatment and management of water contamination dangers.

System components are integrated and

shipped ready to put in place, plumbed into water line (source water), and operate. Factory assembled and mounted, Pipe size: 3/4" In/Out Unit size: Approx 49"W X 31"H X 10"D • Approx weight 80 lbs. All TWT systems are shipped with 120 VAC/60Hz current source. Other current source available upon request. Must specify current source requirements when placing order.



TWT-MD-1005 (15 GPM)

Specifications: Factory assembled and mounted on stainless steel frame with mounting brackets and/or holes provided, Size Approx: 58"W X 49"H X 8"D. Weight Approx: 122 lbs. (may vary according to custom design requirements). 1" in/out. Staged Filtration: Sediment, Carbon and GAC. Filters are interchangeable allowing you to meet your specific water treatment needs at all times. *Other filter mediums andmicronic sizes are available and are based upon input water quality and customer and/or industry specific treatment requirements (medium TBT). All electrical, piping, fittings, pumps, and materials (equipment) used in the system can be engineered and system integrated to conform to requirement of the submitted RFQ.

OPTIONAL: Self Cleaning sediment pre-filter available upon request



TWT-MD-1006 (30 GPM)

Specifications: Factory assembled and mounted on stainless steel frame with mounting brackets and/or holes provided, Size Approx: 58"W X 49"H X 8"D. Weight Approx: 141 lbs. (may vary according to custom design requirements). 1 1/2" in/out. Filter mediums and micronic sizes used in 3-stage filter housings is configured as illustrated above. Other filter mediums andmicronic sizes are available and are based upon input water quality and customer and/or industry specific treatment requirements (medium TBT). All electrical, piping, fittings, pumps, and materials (equipment) used in the system can be engineered and system integrated to conform to requirement of the submitted RFQ.

OPTIONAL: Self Cleaning sediment pre-filter available upon request

*Upon request if needed other filter mediums used in 3-stage filter housings can be determined by a water quality analysis (purchaser responsibility). Micronic sizes of filters are generally 10, 20 microns, unless otherwise specified.

**Versatile Fluid
Management
Products & Systems
To Effectively Meet
The Needs Of Any
Industry &
Application**

- Control Scale Deposits

- Bacteria
- Corrosion
- Algae
- Colloids

In All Fluid Based
Systems

**Potable Water,
Process and Waste
Water Treatment &
Conditioning**

**PROTECTION FOR
NEW EQUIPMENT**

TWT provides new
equipment with the
ability to enhance the
product features and
benefits

**TREATMENT FOR
EXISTING EQUIP-
MENT**

Retrofit existing equip-
ment to improve its
operating efficiency and
life cycle

CUSTOM DESIGN

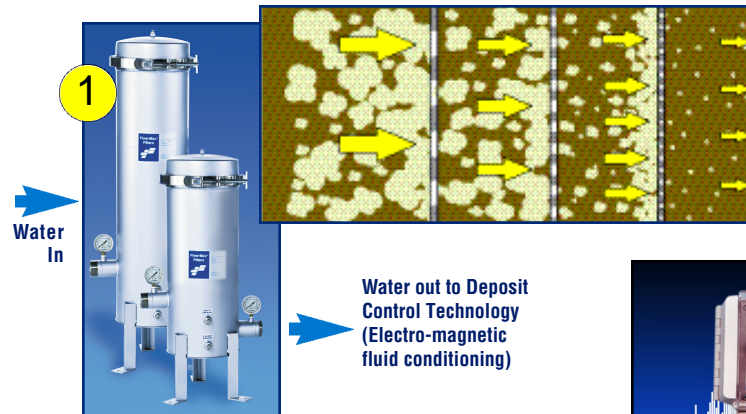
Let TWT, Inc. custom
design a fluid manage-
ment system to meet
any industry specific
application

- Commercial
- Industrial

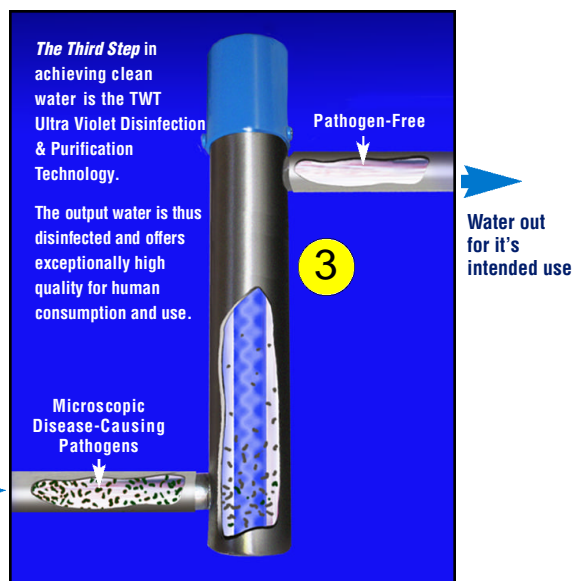
Water lines in the commercial & industrial sectors, where clean water is essential, commonly allow a contaminated interior environment conducive to the growth of bacteria, protozoa, and fungi. These initially arrive in small numbers through wells and public waterline plumbing systems. Over time, these microorganisms bind to the sides of your water pipes, tubing and equipment forming biofilm. As water flows through the pipes and tubes, the biofilm sheds microorganisms and bacterial endotoxins into the water, leading to these harmful conditions.

Pre-Filtration Options:

TWT Deposit Control, UV sterilizer units can be combined with different pre-filtration solutions, such as multi-staged filtration in stainless steel filter housings, or in Polypropylene Jumbo filters.



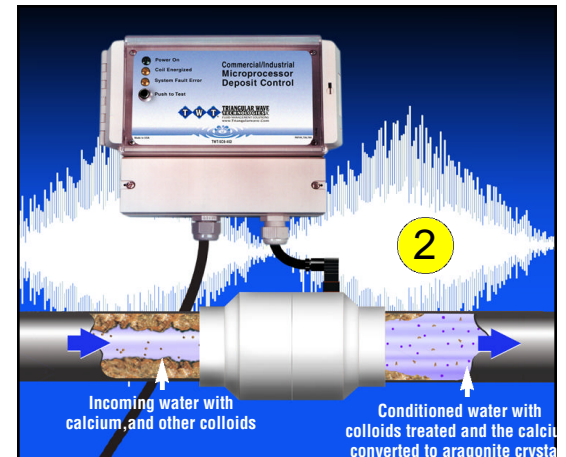
The First Step in achieving clean water is the staged filtration system that effectively removes particulate matter and similar debris.



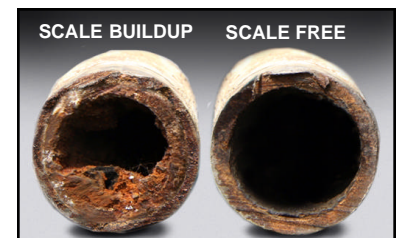
The Third Step in achieving clean water is the TWT Ultra Violet Disinfection & Purification Technology. The output water is thus disinfected and offers exceptionally high quality for human consumption and use.

**Multi-Process Filtration, Conditioning,
Treatment and Purification Technology.**

**Optional: Filtration, TWT Patented
Deposit Control Technology. Suggested
product integration for enhanced
results if required!**



The Second Step in achieving clean water is the TWT Chemical-Free Deposit Control Technology (hard water problems solved easily)



In effect, a clean, corrosion-free delivery system is restored and maintained in an environmentally safe and chemical-free manner. The result is clean water, pipes and tubing with no biofilm and bacterial contamination.

All-in-One Integrated Water Treatment Systems P.O.E./P.O.U. Applications

Chemical-Free • Multi-Stage Filtration • Electro-Magnetic Fluid Conditioning • UV Disinfection/Purification

Triangular Wave Technologies, Inc. All-In-One fluid management systems, the ultimate in water treatment & conditioning.

TWT® systems are factory engineered and assembled, applying all of the needed elements for maximum fluid protection, management and peace of mind in one simple packaged solution. TWT® Filtration, Microprocessor Deposit Controller, Reaction Chamber and UV Disinfection units are combined to provide a start-to-finish answer to simplified prevention, treatment and management of water line contamination dangers.

The TWT All-In-One Fluid management water disinfection/ purification systems are unique, compact, self-contained units for the treatment of water.

Water lines in the residential, commercial & industrial sectors, where clean water is essential, commonly allow a contaminated interior environment conducive to the growth of bacteria, protozoa, and fungi. These initially arrive in small numbers through wells and public waterline plumbing systems. Over time, these microorganisms bind to the sides of your water pipes, tubing and equipment forming biofilm. As water flows through the pipes and tubes, the biofilm sheds microorganisms and bacterial endotoxins into the water, leading to these harmful conditions.

TWT All-In-One Wall Mounted Systems

A. Self-cleaning sediment filter (optional)

The first step in achieving clean water is a filtration system. Micron filter with a built-in manual flush valve to purge built-up sediments in the bottom of the filter. Filter will initially clean the water so the replacement sediment and other media cartridges will have a much longer service and life cycle.

BRS Specifications: Factory assembled and wall mounted on stainless steel board (Size & weight may vary according to custom design). Filter medium and micron sizes used in staged filter housings are configured as illustrated. Other filter medium and micron sizes are available and are based upon input water quality and customer and/or industry specific treatment requirements (medium TBT).

Please Note: System engineering design, weight, size and system component assembly can vary based on TWT engineering review.

Pumps, piping, fittings, valves, and other material needed to and from system owners responsibility. The rugged self-contained design of this system ensures that the system will enjoy a long and reliable lifecycle when properly cared for.

B. Three (3) Stage Filtration

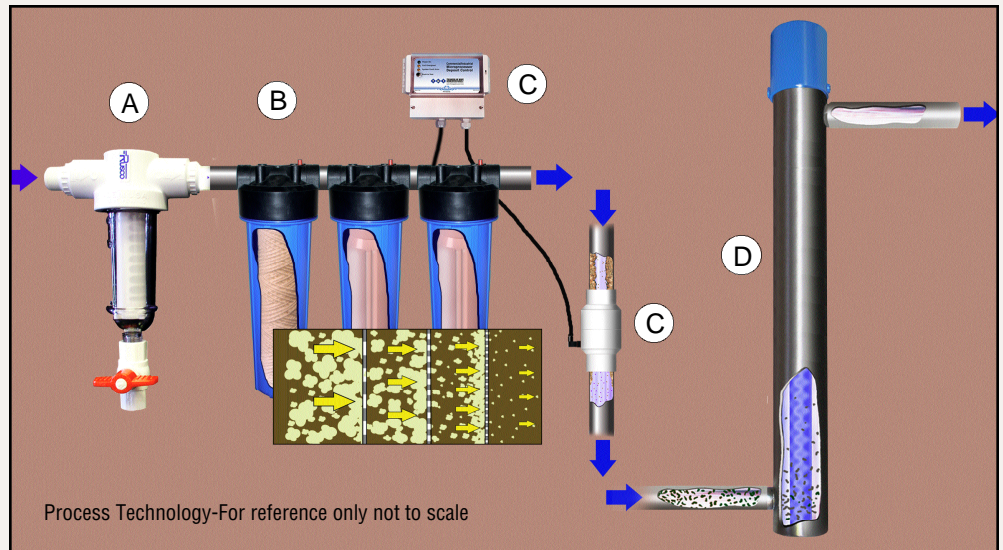
Filters are designed to trap various kinds of debris, dirt and organic particles that will otherwise enter your equipment and/or plumbing system, restrict your water flow and create a breeding ground for bacteria. Water is filtered to remove lingering sediment, chlorine, heavy metals, organic carbon compounds, volatile organic chemicals, pesticides and hundreds of other chemicals sometimes found in source water. (see step 1 on page 6)

C. TWT® Patented Deposit Control technology

Hard water problems solved easily. Control scale deposits, bacteria, corrosion, algae and colloids in all fluid based systems. Providing comprehensive end-to-end treatment & conditioning. **(chemical-free)**

D. Ultra Violet Disinfection & Purification

The UV disinfection technology used in the system provides safe process and potable water, free of disease-causing pathogens. As water passes through the UV chamber, UV light will attack and render harmless any bacterial, viral or spore contamination present in the treated water. "High intensity UV light destroys these contaminant's with a 99.9% or greater kill rate".



Note: Self cleaning filter for MD1005 & MD1006 available upon request (20" housing with higher flow rate).

Installation: Licensed plumber and/or contractor is recommended. Must have enough room on all sides for filters, UV replacement & maintenance

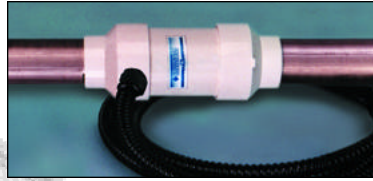
UV lamp replacement: To ensure adequate disinfection/purification of water line contamination, replace UV lamps every 12 months (or sooner depending on water use, quality and conditions).

Sediment and Carbon Cartridge Replacement: Generally twice a year, depending on water use, quality, & conditions.

Note: TWT Inc. recommends that an initial supply of replacement products e.g., filters, UV lamps etc. be stored at owners facility at all times, that will insure uninterrupted service and treatment.

Hard Water Problems Solved Easily—Chemical-Free

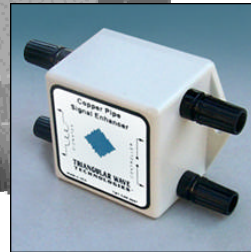
Control Scale Deposits / Bacteria / Corrosion / Algae / Colloids In All Fluid Based Systems



TWT® Reaction Chambers

To use in conjunction with the TWT Deposit Control Systems when required, Triangularwave Technologies, Inc. has developed a line of factory-wrapped wire Reaction Chambers to address magnetic pipe environments. Typically, wire coil cannot be installed on any magnetic pipe, such as steel, galvanized steel, ductile iron, or cast iron. The TWT Reaction Chambers solve this problem by providing an easily installed section of non-magnetic pipe to provide the proper pipe material for the Deposit Control System to work as designed. The TWT Reaction Chambers are fully sealed, protecting their two layers of factory-wrapped coil. The PVC, Stainless Steel and the Industrial Reaction Chamber systems are designed and manufactured to meet the highest quality specifications.

Power On
Coil Energized
System Fault Error
Push to Test



TWT® Copper Pipe Signal Enhancer

The copper pipe signal enhancer is a passive signal/ impedance matching circuit. This device provides a power boost to the conditioning signal in copper pipes (for copper pipe applications only).

Efficient Cost Effective & Reliable



HARD DOLLARS SAVINGS- Chemicals, Salts Water & Energy

- Usage reductions of around 90% or more are typical.
- Energy - systems have been found to deliver between 5 and 15 % energy savings when compared to a well functioning chemical system because the controller adapts to changes in water conditions without operator intervention. Energy savings can be much higher (up to 40 %) vs. a poorly performing chemical system or no chemical system at all.

SOFT DOLLARS - Materials, Labor, Time, Safety

- Chemical, salt handling and storage costs - reduced material and labor costs, freed-up storage space and cost allowance for increased safety (risk reduction). Reduction comparable to chemical cost reduction (up to 90 %).
- Maintenance, repair, replacement and downtime costs (chemical & salt delivery systems) - due to reduced usage rate. Reduction comparable to chemical and salt cost reduction (up to 90 %).
- Maintenance, repair, replacement and downtime costs (plumbing system,) due in part to the adaptability described above under "Energy" Cleaning of the system and/or during shut down is also generally easier with TWT technology, as any film on any surface can be easily removed with a soft cloth. Additionally, the lower level of chemicals in the system will make it safer for workers doing the cleaning (75 - 90 %).

LIFECYCLE SAVINGS

- Savings continue typically for 10 years or more from date of installation. Savings accelerate after the payback period and continue for the life of the system. Lifecycle savings are thus typically many times the cost of the TWT System.

HARD DOLLARS

- Can be estimated from purchase records or water volume and prices from the previous year.

SOFT DOLLARS

- Costs should be estimated based on the average of 10 years of data, or the age of the system if less than 10 years old, to smooth out the effect of infrequent repairs and replacements.

LIFECYCLE SAVINGS

- Are calculated as the net present value of the sum of the annual savings over 10 years using a reasonable interest rate (e.g. prime plus 2 %).

TYPICAL PAYBACK is less than 2 years when considering **HARD DOLLARS ONLY**.



ISO Certified Facility

MADE IN U.S.A.





**Lots of companies provide products and systems,
TWT provides solutions.**

CHEMICAL-FREE—THE GREEN MARKET ANSWER

**TWT® Offers A Bold Series Of Chemical-Free Products & Systems Designed
To Meet The Demanding Challenge In Fluid Management**

**Technologically Advanced Methods for Water & Fluid Treatment
Providing Comprehensive End-To-End Solutions**

**Meeting The Needs Of Any Industry And Application
“The Competitive Edge”**



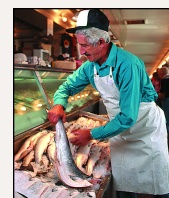
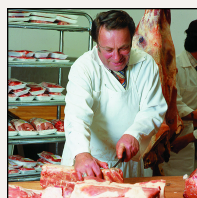
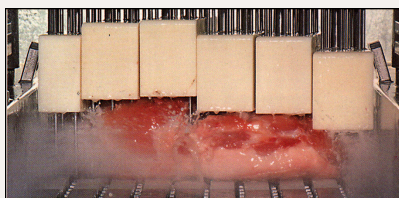
**Chemical-Free Products &
Systems for the Commercial
& Industrial Environments.
Utilizing Filtration,
Patented Deposit
Control, Disinfection
& Purification
Technology.**



**Custom Engineered Multi-Process
Modular Water Treatment System,
Designed to Customer's
Specifications.**

TWT offers multiple treatment systems
that effectively treat a range from
4 GPM to 500 and greater GPM flow rate.

Go Green Save Green



Conserve Water, Save Energy...Non-Chemical, Safe, Cost-Effective Water Treatment

The Return On Investment of a TWT System is Undeniably Significant From Operational, Economical, and Safety Points-Of-View.

TWT offers a full range of products & systems designed to address fluid problems wherever fluid flows. From TWT® patented deposit control technology to pre and post filtration needs, ionization, disinfection, and ultraviolet purification treatment and conditioning. Components and subsystems chosen from across the range of treatment methods can be combined in different configurations to provide custom solutions specific to your facility site or application.

TWT also has extensive design, engineering, manufacturing, consulting and training ability to work with customers worldwide, and to use its products and/or systems in whole or component form, as a component assembly, or as an accessory to their primary product. Take advantage of our outstanding manufacturing and marketing expertise.

Let TWT custom design a product and/or system to meet your specific application (footprint), flow rate, system integration, and/or retro-fit program needs.

At TWT, Inc. our unique capabilities and custom design expertise have and continue to successfully solve a wide variety of problems for a wide variety of customers world wide commercial, industrial, and residential.

- FROM IDEAS TO FINAL PRODUCTION
- EFFICIENT ENGINEERING DESIGN TEAM

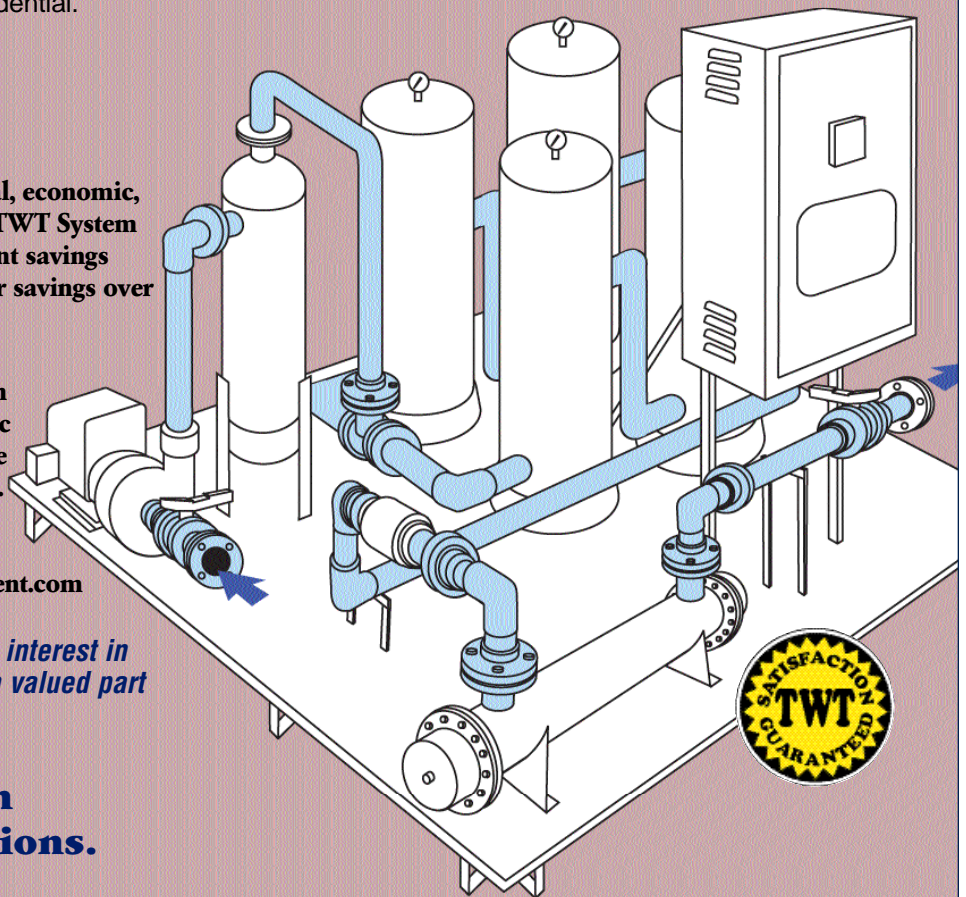
TWT products make sense from operational, economic, and safety point of view. Ownership of the TWT System will afford you and our customers significant savings over a short period of time and even greater savings over the life of the equipment.

Contact your Distributor or TWT today (info@Triangularwave.com) for information on what TWT system will meet your specific application needs and/or visit [Triangularwave Technologies, Inc. Comprehensive Websites](http://TriangularwaveTechnologies.com). The Valuable Technical Resource For All Involved In Water And Fluid Management. www.Triangularwave.com • twatwatertreatment.com

We sincerely thank you for your time and interest in our products, and look forward to being a valued part of your operation.

Bringing You The Best in Fluid Management Solutions.

- STATE-OF-THE-ART PRODUCTION EQUIPMENT AND FACILITY TO MEET THE EVER CHALLENGING PRODUCTION REQUIREMENTS
- TECHNICAL AND TEST DEPARTMENT WITH OUTSTANDING QUALITY CONTROL GUARANTEED
- ECONOMICAL & COST EFFECTIVE
- ENERGY & WATER SAVINGS
- IN ORDER TO ENSURE THE GREATEST LEVEL OF PERFORMANCE AND SATISFACTION WORKING WITH TWT PRODUCTS AND SYSTEMS, WE RECOMMEND THAT YOU CONTACT OUR ENGINEERING STAFF, WHO WILL BE PLEASED TO WORK CLOSELY WITH YOU TO DETERMINE THE OPTIMAL TREATMENT REQUIREMENTS (UV Dosage, GPM and/or System Integration) INSTALLATION AND APPLICATION FOR YOUR INDUSTRY SPECIFIC PROJECT.
- ENGINEERED MULTI-PROCESS MODULAR WATER TREATMENT SYSTEMS, DESIGNED TO CUSTOMER'S SPECIFICATIONS.



TWT® The Ultimate in Water Treatment & Conditioning

The Green Way

